

www.kamkiu.com

总公司 HQ:

金橋鋁材集團有限公司

Kam Kiu Aluminium Products Group Ltd.

地址:香港九龍尖沙咀東部科學館道1號康宏廣場北座1817室

Add:Rm17, 18/F, Concordia Plaza, 1 Science Museum Road,
Tsimshatsui East, Kowloon, Hong Kong

電話(Tel): +852 2302 0808

傳真(Fax): +852 2302 0062

郵箱Email: info@kamkiu.com

生產基地 Production Facility:

台山市金橋鋁型材廠有限公司

Taishan City Kam Kiu Aluminium Extrusion Co.,Ltd.

地址:中國廣東省台山市大江鎮 石橋工業區

Add:Dajiang Town, Taishan City, Guangdong, China

郵編Post: 529261

電話Tel: +86 (750) 543 8596

傳真Fax: +86 (750) 543 8173



Company Profile

Kam Kiu Aluminium Group (KAP), established in 1983, is an aluminium extrusion company on series 1-7 alloy, which employs over 2,300 people, possesses 30 direct extrusion presses, 4 indirect extrusion presses from 550UST to 6,180UST and 2 AirSlip casting systems. We have the compressive operation system including die design and manufacturing, billet casting, extrusion, surface treatment and precision machining. Our aluminium product covers high end electronics products, automotive, transportation, vessel, industrial applications, building and construction etc. Kam Kiu Aluminium Group is certified with ISO9001, IATF16949, automotive standard; DNV, Norway marine standard; BV, France ship standard; CCS, China ship standard; ISO14001, environmental standard; OHSAS18001 occupational health and safety standard etc.



Process

Remelting

- Ultrasonic flaw detection in Aluminium billets.
- On-line hydrogen degassing system, cartridge filter systems.



Extrusion Process

Kam Kiu possesses 34 extrusion presses equipped with power frequency cascading furnace, online water quenching system, annealing furnace, quenching furnace. The annual output is 140,000 tons.



Precision Machining

Kam Kiu is equipped with 3-axis to 5-axis CNC precision machining centers in order to provide our customers with one-stop-shop services.



Surface Treatment

Kam Kiu has several anodizing lines, for producing anodized, colored and polished extrusions for the length up to 8.5 meters; in the meantime, we also have several powder-coating and spray painting lines.



Testing Centre

Kam Kiu has a completed testing system to guarantee the consistency of product quality and to meet the requirements of our customers.



Certification



ISO9001:2015



IATF16949:2016



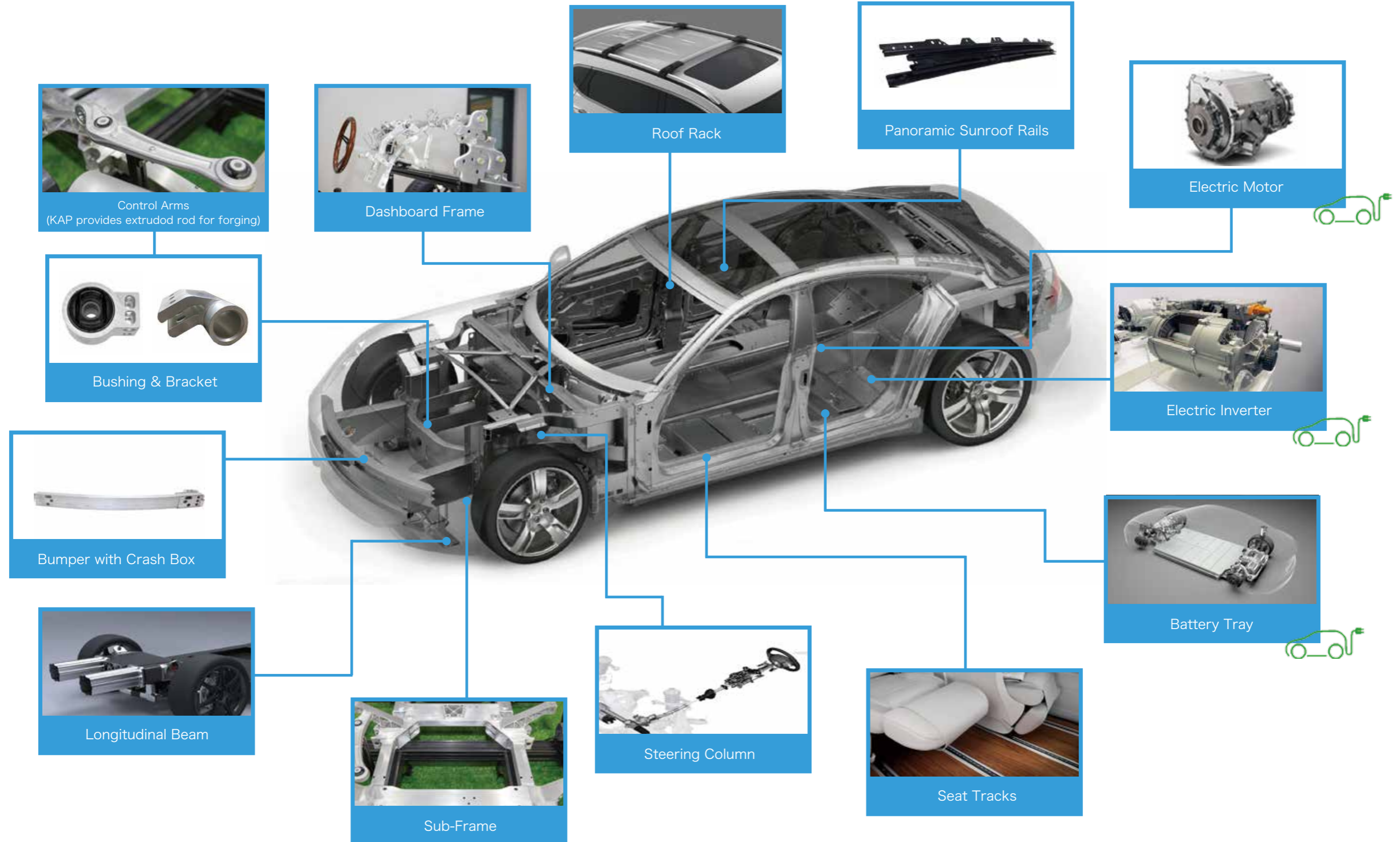
ISO14001:2015
GB/T24001:2016



OHSAS18001:2007



Product introduction (Auto Parts)



Production Equipment

Large-Scale CNC Machining Center

Kam Kiu is equipped with advanced large and small sized 3-axis to 5-axis CNC machining center to serve specifically for the processing of large scale and complicated car parts.



Stamping Processing

With the stamping processing line consisting of several stamping machines and the advanced stamping tooling technology, Kam Kiu is able to process precision car parts with highest efficiency and lowest cost.



Bending Processing

Kam Kiu is equipped with 5 production lines to serve the large demands from the market for panorama sunroofs. The current bending equipment capacity: 30,000 set/month for standard sunroofs, 15,000 set/month for panorama sunroofs.



Stretch Bending Processing

The bumper is the main passive safety component of a car and is essential to the safety of the driver and other road users when an accident occurs. Therefore, the major car producers gradually employ high-strength alloy for the production of bumpers. Kam Kiu is equipped with imported high-strength alloy stretch bending machines to effectively manage the stretch bending of high-strength alloys.



Automatic Welding Center

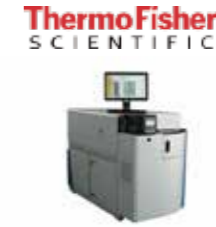
The automatic welding center of Kam Kiu is equipped with double-station welding room, full-automatic robotic arms, custom-built welding clamps, automatic welding machines, smoke treatment system and quick testing center. The planned processing capacity of special type bumper component product: 11,000 set/month.



Testing Equipment

High-Performance OES Equipment

Precisely detecting the compositions of Aluminium alloy via PMT optical equipment. The equipment is supported by single-substrate and multi-substrate configurations and trace analysis function, as well as on-line impurity analysis.



Automatic Ultrasonic Flaw Detecting Equipment For Aluminium Billet

Full-scale-immersed flaw detecting method is employed. After water coupling, the ultrasound propagates onto the aluminium billet and reflects if there is any impurity of cracks in the aluminium billet. The ultrasonic equipment will record the reflections and send realtime alerts.



Universal Material Experiment Machine

Experiment range: 0-50KN, 0-200KN, 0-100KN



Aluminium Extrusion Section Full-Scale Automatic Measuring Machine

This is specially designed for industrial aluminium extrusions with highly dimension tolerance requirements. High-resolution optical technology is employed for measuring the extrusion section and a report will be generated automatically afterwards.



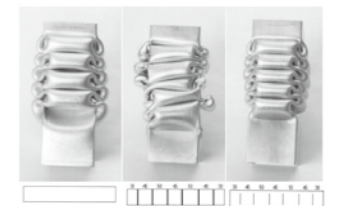
Aluminium Part CMM 3-Coordinate Measuring Machine

Employed in many industrial practices: the testing of the initial workpiece and the final workpiece, the verification of clamp and the control of the production process, etc.



Crush Test

For the simulation and testing of Aluminium alloy bumper static crush.

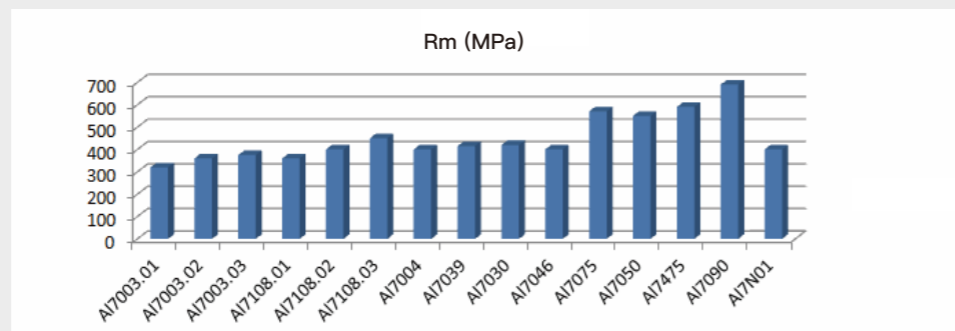
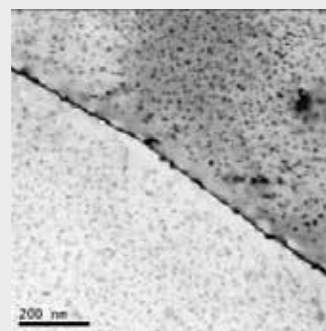
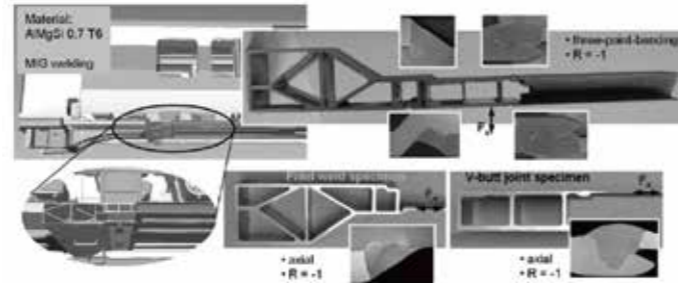
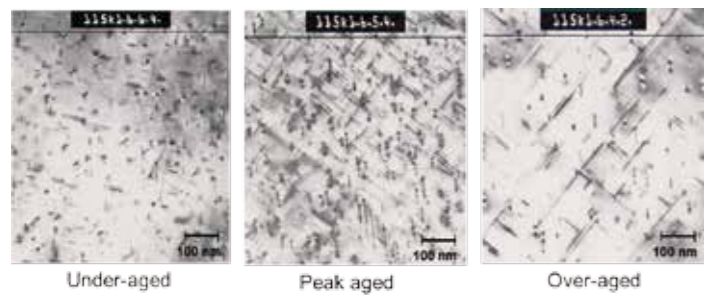
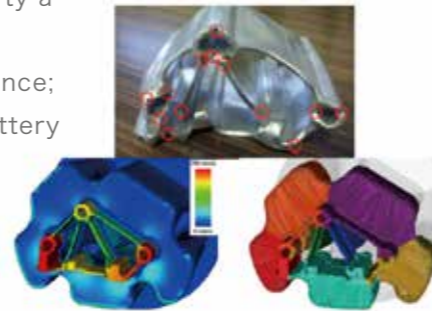


R&D Department

The lightweight of cars can effectively enhance energy efficiency and reduce harmful gas emission. Kam Kiu has built an independent R & D center to positively promote Aluminium as the material for the sustainable development of lightweight cars.

The R & D projects include:

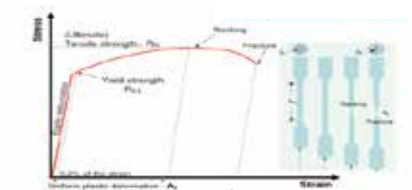
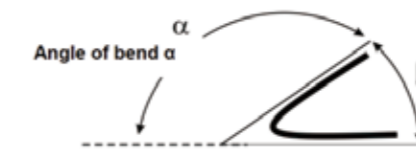
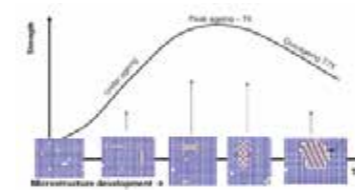
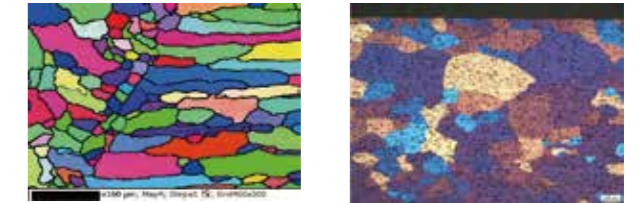
- The research of new Aluminium alloys with high strength, high elongation, high tenacity, anti-fatigue, high welding performance, high formability, high extrusion efficiency;
- The design, simulation and production of Aluminium extrusions with complicated sections;
- The influence of heat treatment process on joining property and crashworthiness;
- The influence of joining techniques on assembly performance; Aluminium alloy assembly (steering system, sub-frame, battery tray, chassis);
- High-strength Aluminium alloy tubing;
- High crashworthiness assembly parts;
- Molding techniques (MIG/FSW/Hydroforming)



Prototype Shop & Lab Identified Equipment

Prototype Shop and Lab Identified equipment:

- CMM
- Ageing simulation oven
- Crush/ductility/expansion test machine
- Upgrade tensile test machine
- Polishing/etching for microscope samples
- Reference material for spectrometer
- SCC and IGC corrosion test
- SEM
- TEM



Third-Party Assembled Parts Testing Capability

Test	Specification	INTERNAL	External Partner
Crush, GB/T 31467	GB/T 31467	X	
Poller Test	GB/T 31467	X	
Mechanical Shock, z.B.	GB/T 31467	X	(X)
Vibration, Shaker, Fatigue	diverse	(X)	X



Sled car test 30 km/h, Quasistatic tests



Drop tower



Intrusion tests 200kN



Low-Frequency Tests

Auto Parts Production Plant

Kam Kiu Aluminium Group established in 2016 an independent “car part factory” to develop lightweight car part products.

The car part factory as the “lightweight traffic practice center” of Kam Kiu, strictly conforms with <IATF16949> and dedicates itself in constructing a comprehensive practice base of technology development, production, quality control, marketing & sales.

At the same time, industrial automation and data visualization management techniques are employed. The production data are display real-time and is integrated into Kam Kiu new SAP management system.

The company is actively expanding the car product market and developing new lightweight materials and is willing to join hands with our shareholders and establish more strategic partnerships. Let’s contribute to the future of lightweight automobiles together!

